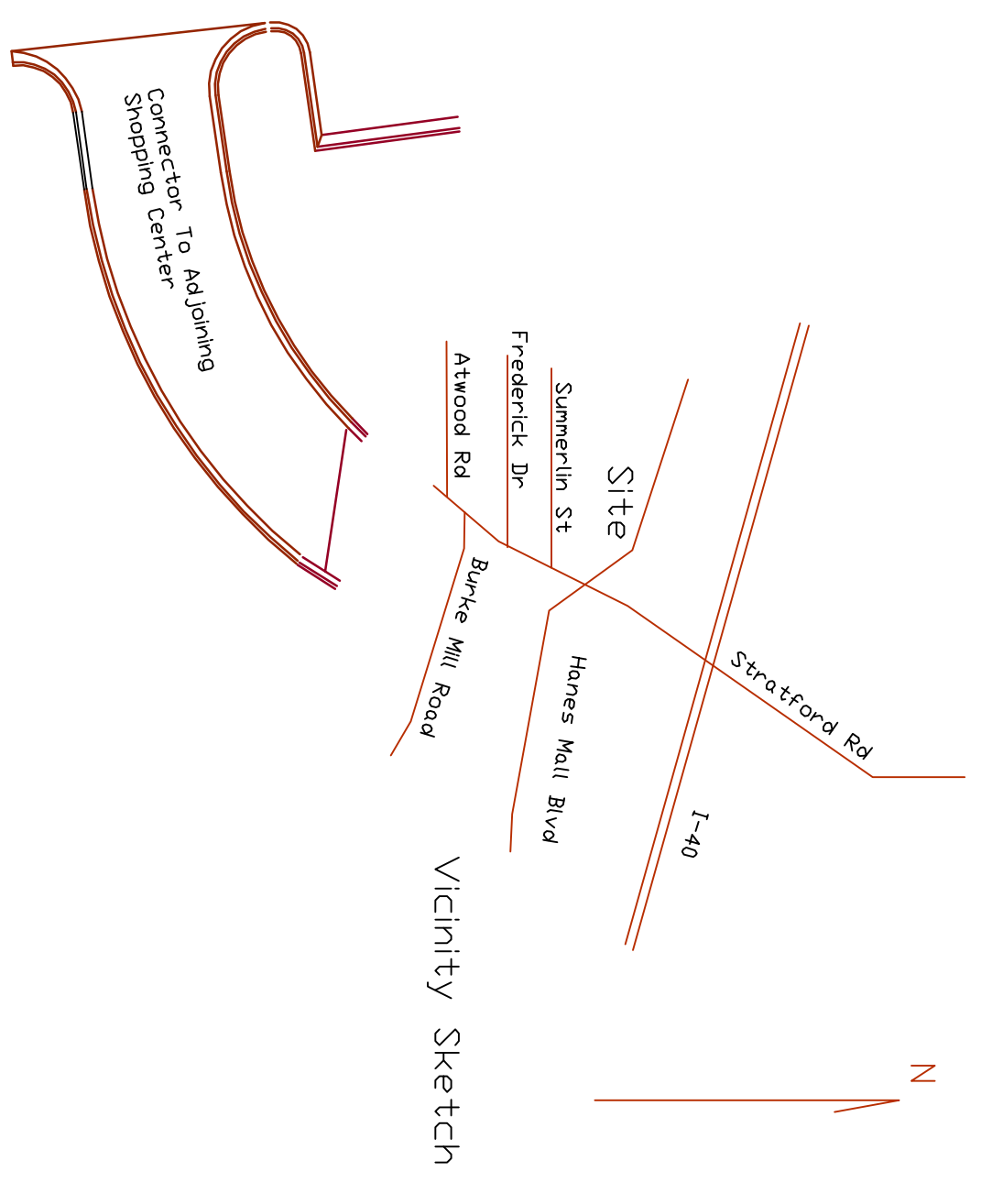
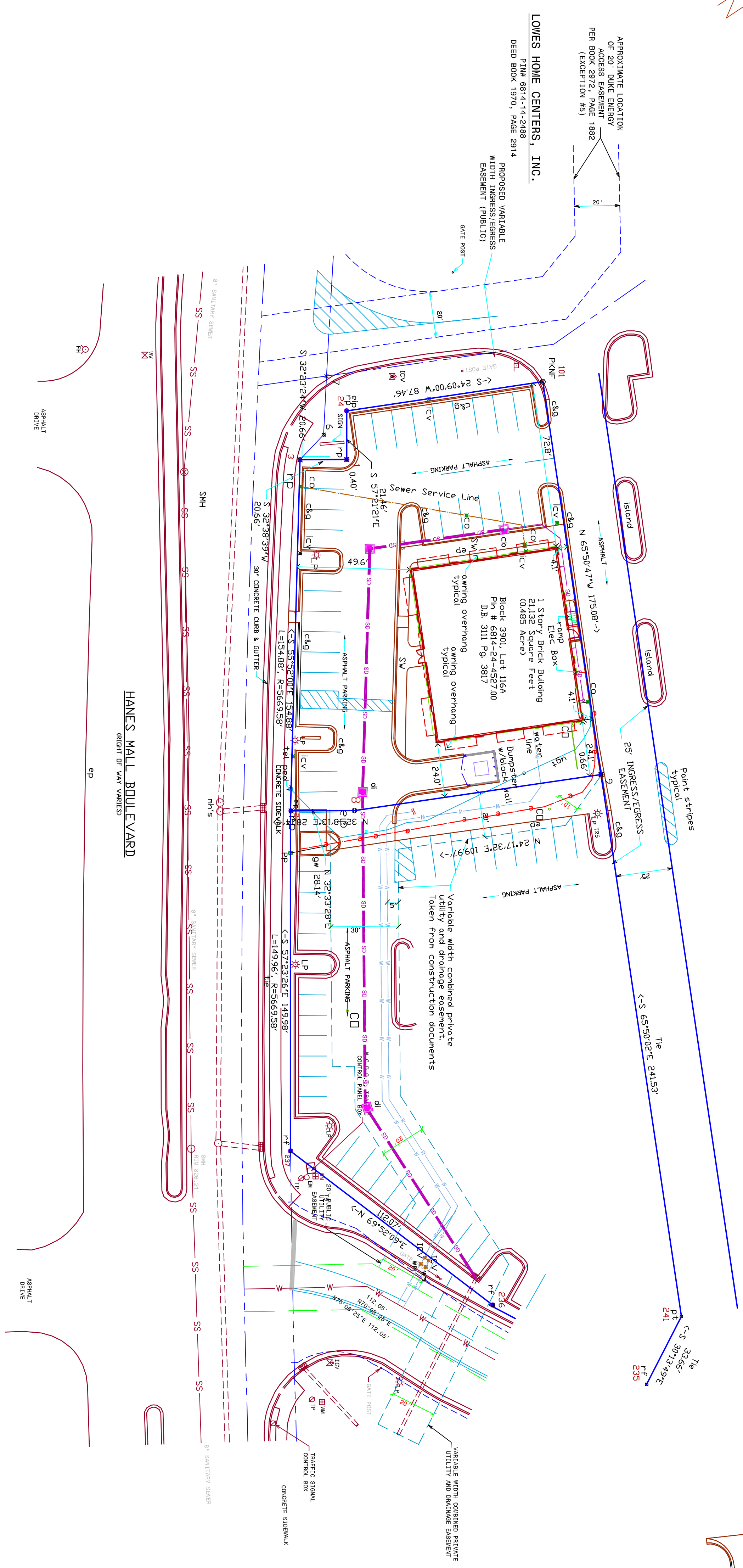


LOWES HOME CENTERS, INC.  
 PIN# 6814-14-2978 200 (PORTION)  
 DEED BOOK 1792, PAGE 5597 (PORTION)



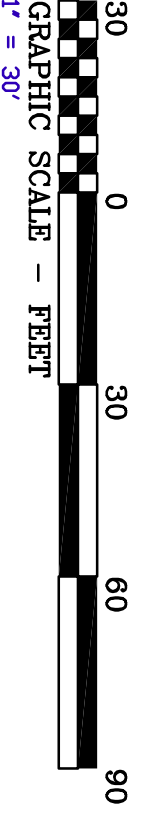
This map was prepared to show the location of the recently constructed store and the utilities affecting this store. The utilities shown are based on the locations of the above ground appearances, point marks placed by One Call and the construction maps available at time of survey. We have made a very diligent effort to show the underground utilities, but we can not guarantee that all utilities are shown or that the ones shown are in the exact location.

This property is a part of a recorded subdivision listed in the Forsyth County Register of Deeds under PB 61 Pg 35. This plat is subject to all easements, agreements, and rights of way of record prior to date of this plat and not shown in a visual inspection of these premises.

I, Randall G. Kale, Professional Land Surveyor, certify that this map was drawn from an actual field survey performed under my direction and supervision, that the ratio of precision is 1 in 10,000+.  
 Witness my hand and seal this 6th day of May, 2014.

*Randall G. Kale*

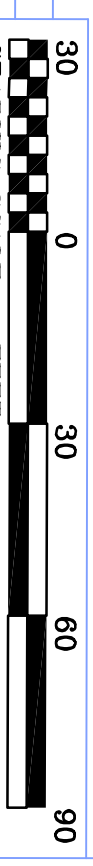
Randall G. Kale, P.L.S. L-2978  
 LAST REVISED



MAP REFERENCES

Matress Firm  
 Hornes Mall Boulevard  
 Block 3901, Lot 116A  
 Pin # 6814-24-4527.00  
 Winstonown Township, Forsyth County, NC

**KUHN CONSTRUCTION SURVEYS**  
 202 Hidden Meadows Trail  
 MOCKSVILLE, NC 27028  
 (336) 492 - 2282



JOB NUMBER: 14050  
 FILE NAME: 14050  
 ORIENTED TO: NC GRID NORTH  
 SURVEY BY: RKC  
 SCALE: 1" = 30'  
 DATE: 05/06/14  
 PRECISION: 1 PART IN 10,000+

